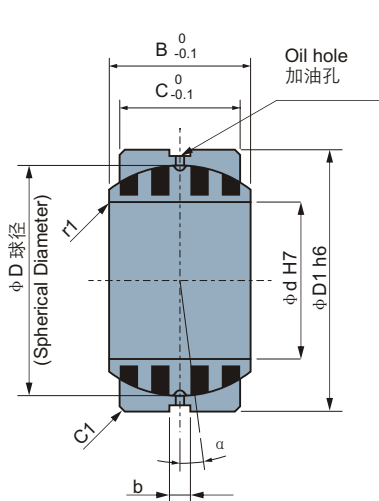
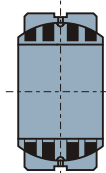


# JDBS Metric Spherical Bushes 自润滑关节轴承

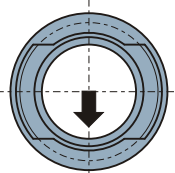


Spherical bushing assembly  
关节轴承的装配

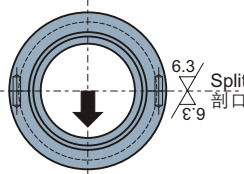
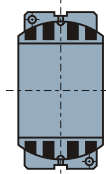
• JDBS 015~090



Fixing direction  
安装方向

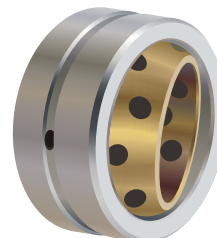


• JDBS ≥100



Inner ring 内圈	Material 材料	650# + Gr/石墨
Outer ring 外圈	Material	S45C
	Hardness 硬度	HRC25~30

Recommend shaft & housing: 推荐轴和座孔公差  
Housing: H7 座孔  
Shaft: g6 轴



Unit(单位): mm

Standard No. 型号规格	d	H7	D1	h6	B	C	D	b	Alignment Angle $\alpha^\circ$ 调整角度	Allowable Radial Load (kN) 径向承载	Allowable Thrust Load (kN) 轴向载荷	
JDBS-015	15	$^{+0.018}_0$	26	$^0_{-0.013}$	12	9	22	4	8	6.5	0.5	
JDBS-020	20	$^{+0.021}_0$	32	$^0_{-0.016}$	16	14	28		4	12.6	1.4	
JDBS-025	25		42		21	18	36		5	21.8	2.5	
JDBS-030	30	$^{+0.025}_0$	50	$^0_{-0.019}$	27	23	44		6	32.0	3.5	
JDBS-035	35		55		30	26	49		5	43.7	4.8	
JDBS-040	40		62		33	28	55		6	54.7	5.7	
JDBS-045	45		72		36	31	62		5	69.7	7.2	
JDBS-050	50	$^{+0.030}_0$	80	$^0_{-0.022}$	42	36	70		6	92.4	10	
JDBS-060	60		100		53	45	90			6	143	16
JDBS-070	70		110		58	50	99			5	181	20
JDBS-080	80		130		70	60	115			254	30	
JDBS-090	90	$^{+0.035}_0$	140	$^0_{-0.025}$	76	65	125	6	313	36		
JDBS-100	100		160		88	75	145			544	64	
JDBS-110	110		170		93	80	155		5	642	73	
JDBS-120	120		190		105	90	170		6	797	94	
JDBS-130	130	$^{+0.040}_0$	200	$^0_{-0.029}$	110	95	180	6	880	105		
JDBS-140	140		210		90	70	180		7	668	56	
JDBS-150	150		220		120	105	200		5	1135	129	
JDBS-160	160		230		105	80	200		8	891	73	
JDBS-180	180	$^0_{-0.032}$	260	$^0_{-0.036}$	105	80	225	6	1002	74		
JDBS-200	200		290		130	100	250		7	1434	117	
JDBS-220	220		320		135	100	275		8	1577	118	
JDBS-240	240		340		140	100	300				1720	118
JDBS-260	260	$^{+0.052}_0$	370	$^0_{-0.036}$	150	110	325	9	2072	143		
JDBS-280	280		400		155	120	350		6	2455	172	
JDBS-300	300		430		165	120	375		7	2630	172	